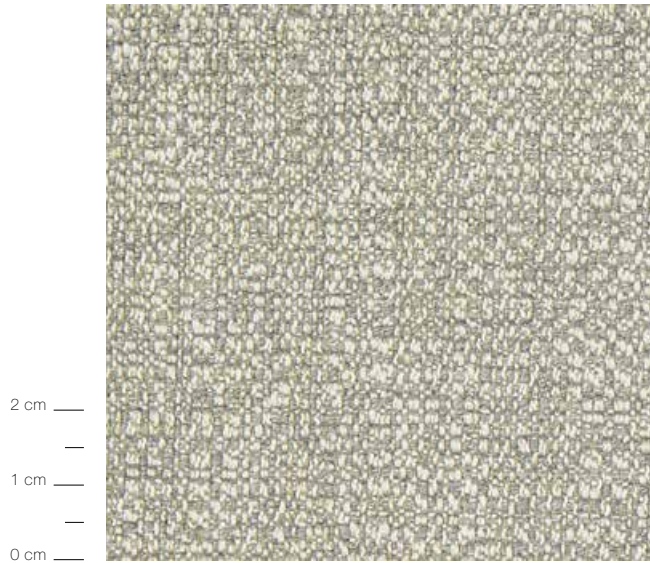


SAN DIEGO

48% PC / 23% WO / 12% PL / 10% NY / 7% CO



CATEGORY



Altezza Width	140 cm / 55 1/2"
Peso al gr/ml Weight gr/ml	560 gr
Solidità del colore alla luce Fastness to light	EN ISO 105 B02: 4 / 5
Formazione di Pilling Pilling test result	A 24.000 GIRI / CYCLES